

Revision 1.c Release Date July 9th 2007

Revision Notes

Technical Specifications Summary

Frequency Range:	470 - 860 MHz	Gain:	12dB
P1dB:	150 Watts CW	Efficiency:	25%
Class:	AB	Temperature Range:	0 to 70°C
Supply Voltage:	32.0V	Max VSWR:	3:1

Amplifier General Description

The **P50-UHF-12** is an integrated TV linear amplifier designed for the television integrator. Providing a minimum of 50W pk sync linear power, the P50-UHF-12 is the perfect IPA or output stage for any broad-band UHF transmitter. Featuring gold metallized LDMOS technology and multi-stage input and output match, this amplifier offers unparalleled performance.

- No RF assembly or circuit tuning!
- 100 Watts of Pk Sync Output Power!
- Combined **Video and Aural** at full rated power!
- 12dB typical gain at Channel 69!
- Modular Construction for ease of Integration!

Amplifier Picture

**Delta RF Technology, Inc.**

High Power RF Amplifiers and Accessories

350 South Rock Boulevard • Reno • NV • 89502 • USA

Phone +1.775 DELTA RF [775 335 8273]

Fax +1.775 DELTA FX [775 335 8239]

website: <http://www.drft.com>email: sales@drft.com

Parameter	Min	Typ	Max	Units	Notes
Frequency	470		860	MHz	
P1dB	49	52		dBm	
Linear Power Out	50			W	Pk Sync
IMD3	-40			dBc	For 2 tones, 4.5MHz spacing, 50 W PEP
Power Input		5.0	10.0	W, CW	
Gain	11	12		dB	
Vsupply	28	32	34	V, DC	
Drain Current		4:1		A, DC	50 w Pk Sync
Input VSWR		3:1			
Insertion Phase Variation		±5		°	Unit to unit
Gain Variation		±1		dB	Unit to unit
F2 Second Harmonic		-20		dBc	
F3 Third Harmonic		-35		dBc	
Baseplate Operating Temperature	-0		+70	°C	

Physical Dimensions 6.0" x 2.4" x 1.0" 15cm x 6cm x 3cm

All specifications valid for 50 Ω output load, $V_{sup} = +32VDC$, $I_{dq} = 1.0A$

Absolute Maximum Ratings

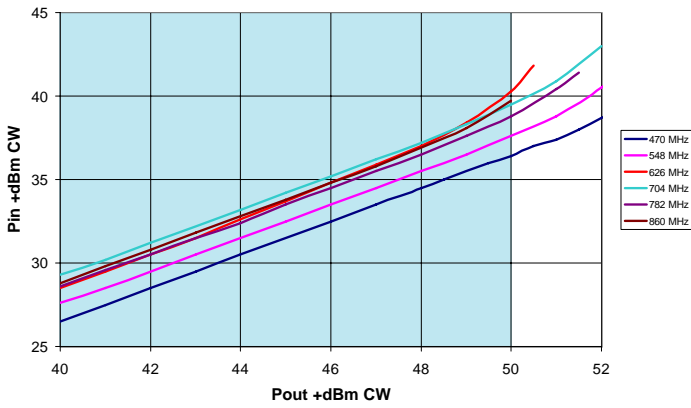
Parameter	Value	Units	Notes
Maximum Operating Voltage	+34	VDC	
Stable Operating Voltage	+28.0 to +32.0	VDC	
Maximum Bias Current, Q100	3.0	A	
Maximum Input Power	41.0	+dBm	
Maximum Drain Current	10.0	A	
Load Mismatch Survival	3:1		
Storage Temperature	-40 to +105	°C	
Maximum Operating Baseplate Temp	+70	°C	

Features, Auxillary Functions

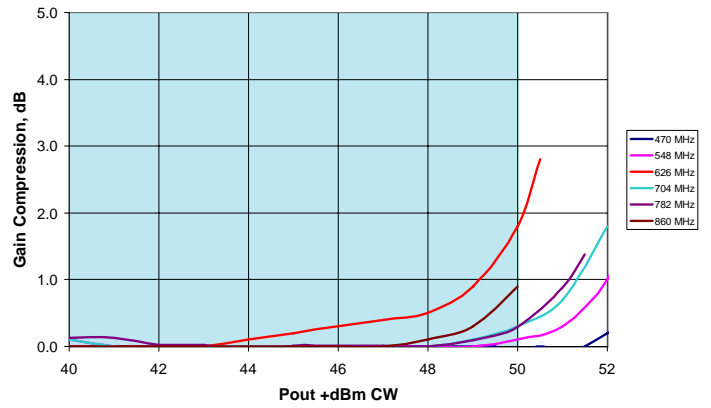
- ◆ Temperature Compensated Bias
- ◆ Temperature Controller - Analog Temperature Output
- ◆ High Temperature Alarm with Selectable Automatic PA Disable
- ◆ High Temperature Alarm Output
- ◆ Amplifier Disable
- ◆ Current Sense
- ◆ Connectorized Power and I/O



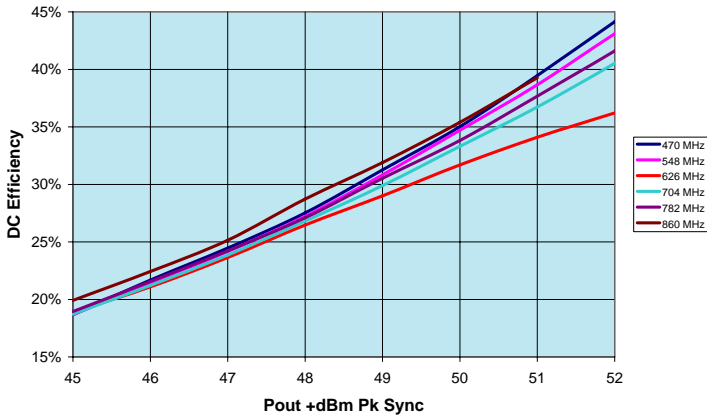
Pin vs. Pout



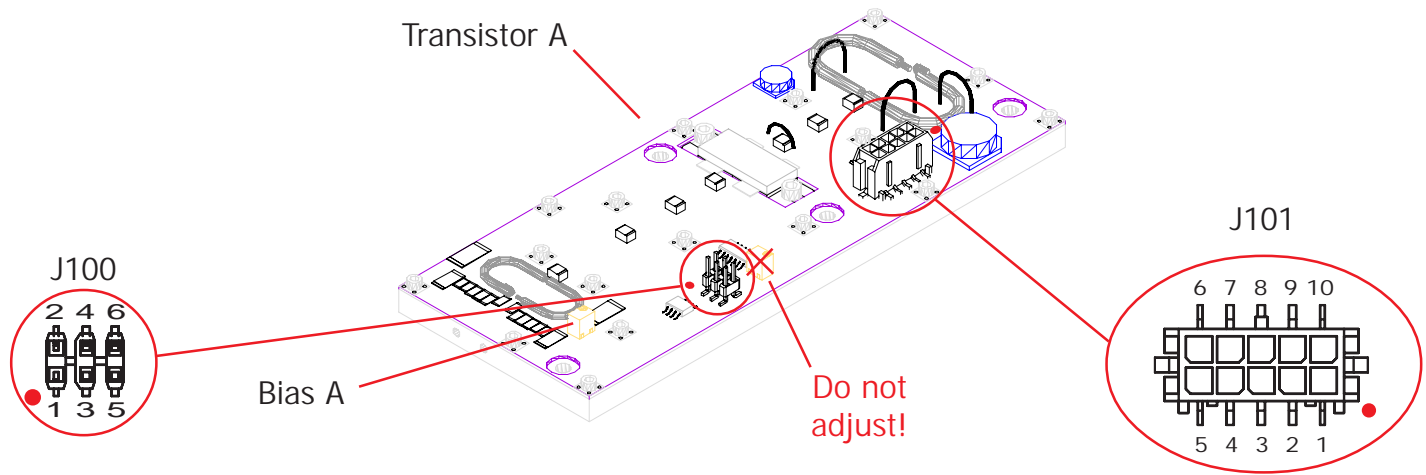
Gain Compression



Efficiency, Super Lumina Black



Electrical Connections:



I/O Standard 0.100" pitch DIP /DC header: SAMTEC type IDSD, HCSD 3M type 89106-0101 AMP 102393-1, 102398-1 BERG 71602-306 -or- Solder directly to Pin in I/O connector	J100-1	ALARM_OUT	TTL Hi when baseplate exceeds 70C
	J100-2	ALARM_IN	Jumper to J1-1 for automatic shutdown at 70C, automatically re-enables at 60C
	J100-3	GROUND	
	J100-4	BIAS_SUP	Not used for this amplifier. Vsup internally connected here.
	J100-5	TEMP	Baseplate Temperature
	J100-6	DISABLE	TTL Hi to Disable amplifier
Power 3.0mm Micro Connector: MOLEX 43025-1000 MOLEX Pin 43030-0001, 43030-0007 AMP 1-794617-0 AMP Pin 794610, 794606 -or- Solder directly to pad adjacent to connector	J101-1,10	CURRENT	Current Sense, Transistor Q1, Q4
	J101-2,3,8,9	GROUND	System Ground
	J101-4,5,6,7	Vsup	+28 to +32 VDC

Connections:

Connect amplifier to +Vsup and Ground using either 3.0mm modular 10-position plug (J101) or soldering directly to pads adjacent to connector. If using Single connection, 14 gauge wire is recommended. 20 gauge wire is recommended for use in modular connector, and all power connections must be used! In all cases, use of teflon insulated wire is highly recommended.

I/O connector (J100) connections are optional.

Connect coaxial cable to input and output RF connections (semi rigid or flexible) using best RF practices. Ensure output cable is of sufficient power handling rating. Pads are provided for ground on co-axial connections.

Amplifier Startup

+Vsup should be applied to amplifier with no drive and with no bias applied. The system must allow drain voltage to reach +28V minimum before applying bias and drive or damage will result to the amplifier and void warranty. This typically takes between 2 - 10 seconds and should be verified by the system integrator. This can be accomplished in several ways:

- 1) Remove R107 which removes jumper between drain power and bias control circuit. Bias and control circuitry receives power through J100-4. Apply power to amp at J101, and remove power from J100-4. After proper voltage has been reached, apply voltage to J100-4 as described above. Amplifier is ready for use.
- 2) Apply power to amp at J101. Place a TTL Hi (+5V) to J100-6 DISABLE. After proper voltage has been reached, remove TTL Hi from J100-6 DISABLE. Amplifier is ready for use.

Bias Current:

Bias current is controlled via temperature compensated bias system that uses a hermetically sealed glass thermistor as reference. If excessive air is directed above the amplifier such that the thermistor is cooled below the temperature of the baseplate, this circuitry may not perform properly. Bias has been pre-set at the factory to 1.0A at +32.0V DC. This bias point has been selected to offer the optimum balance between IMD performance, efficiency, and gain. If the bias point is changed, take great care not to exceed the bias listed on page 1.

Fault Condition - Bad VSWR

Current sense J101-1, J101-10 should be monitored for excessive current. The voltage difference between J100-10,1 (transistor A) to J100-4,5,6,7 is scaled 1A per 0.010 V. If transistor experiences currents in excess of normal operation, a fault condition exists, and the amplifier should be disabled through J100-6 DISABLE. If current on transistor drops to below 0.5A indicated, a fault condition exists, and the amplifier should be disabled through J100-6 DISABLE.

Temperature Sense and Temperature Fault

An on board temperature controller reports temperature on pin J100-5 TEMP. This is scaled to +395mV + (Temperature °C X +6.20mV/°C) and has an output impedance of 1.5kohm typical. An output alarm, J100-1 ALARM OUT, is TTL Low when the temperature exceeds approximately 70°C, and the alarm is cleared when the baseplate temperature drops below approximately 60°C. For automatic operation, jumper J100-1 ALARM OUT to J100-2 ALARM IN and the amplifier will automatically disable by removing bias when the temperature exceeds 70°C, and automatically re-enable when the temperature drops below 60°C.

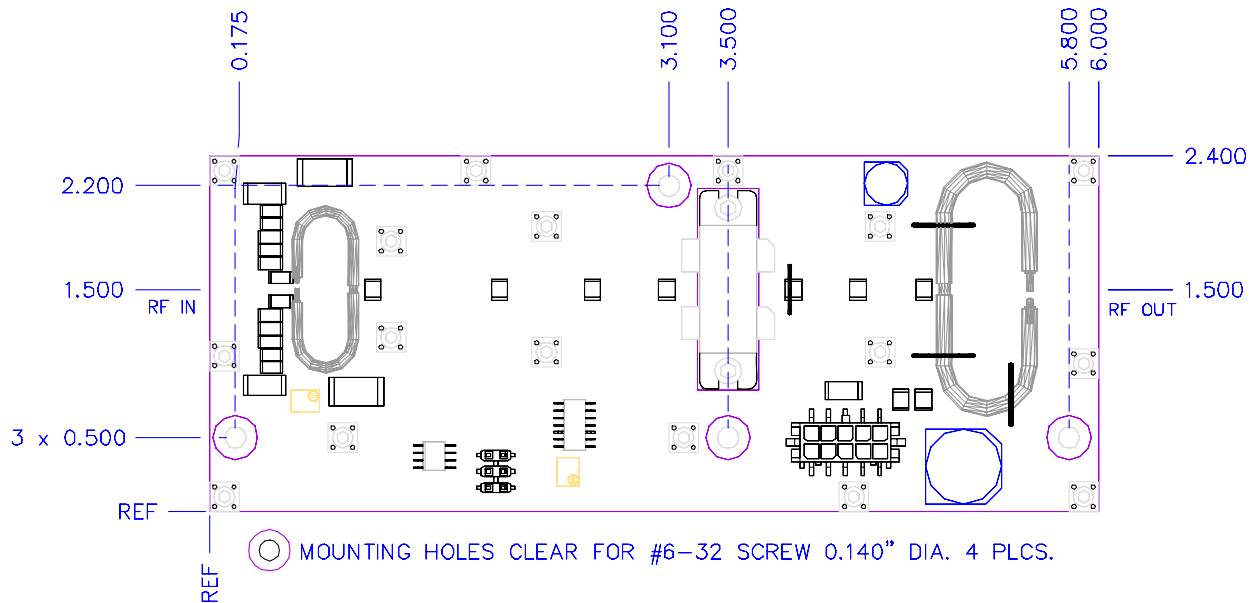
Amplifier Shutdown

To prevent damage to amplifier and surrounding systems, bias and drive should be removed prior to powering down PA. This can be accomplished by removing voltage from J100-4 with R107 removed, or by applying TTL Hi (+5V) to J100-6 DISABLE. Power can safely be removed from PA.

Miscellaneous:

Placing noisy analog or digital systems, such as additional control circuitry, directly over the top of transistors or RF path can cause improper operation. Care should be taken to locate these components where they will not cause interference.





Tips for Mechanical Mounting:

- 1 All holes are clear for #6 Screw. Stainless Steel mounting hardware is recommended, grade 18-8 or better. A lock washer of same material should also be used.
- 2 Ensure mounting surface is flat to better than 0.003" / "
- 3 Use a thin layer of thermal compound on the backside of the PA - no more than 0.001" - 0.002" thickness!
- 4 Torque all screws to 10-12 in-lbs

Considerations for Mechanical Mounting:

- Considerations for proper thermal design include
- Total power dissipated = Total DC Power Consumed x (1-Efficiency)
- Ambient Airflow
- Thermal Resistance of Heat Sink



Ordering Information:

Order Code	Description	DRFT Reference
P50-UHF-12	Pallet Amplifier 50 W UHF Television	1099
PAB50-UHF-12	Amplifier in Enclosure	3689

Options

-A11	SMA Female Connectors In / Out	0201
-A12	Heat Sink Option	0202
-A13	Heat Sink Option with DC Fan, pre wired	0203
-A14	Ruggedized for vibration	0204
-A15	Wire harness, 1' length, 10 wires for pallet amplifier only (NON-FM)	0205
-A16	Wire harness, customer specified length for pallet amplifier only	0206
-T2	Extended Burn In	0271
-T3	Extended Data Collection	0272

Standard Pallet Options:

SMA Female Connectors, Input and Output. Stainless Body, Gold Center pin, 4-hole SMA bolted to pallet amplifier edge through bottom two holes located at amplifiers RF IN and RF OUT locations. All stainless steel hardware.

Enclosure- all aluminum machined enclosure available for most pallet amplifiers. Alodined aluminum, alloy 6061-T6. SMA Female input and output RF connectors. Supply voltage and ground through solder / feedthrough connections. Module must be bolted to appropriate heatsink.

Heat Sink - aluminum extruded heat sink, black anodized. Pallet amplifier or module will be bolted to heatsink. Customer will be required to provide adequate airflow.

Heat sink with fan - aluminum extruded heat sink as above, with included fan bolted to push air through the heat sink. Depending on heat requirements, a second fan may also be provided on the output of the unit.

Ruggedized - all screws have threadlocking compound applied, and all flying components are staked and attached to base. Designed to withstand MIL-STD-810E 514.4 Category 8.

Power Connector - a 10 pin molex connector is used on all standard pallet amplifiers to supply +Vsup and Ground connections, as well as hi-side current shunts for current monitoring. Delta RF offers the mating connector with 1' wires - Red (Vsup), Black (Ground), Yellow (Current monitor). All wires are 18 gauge teflon insulated wires. Customer may optionally specify wire length and wire color.

Testing Options:

Standard - includes power test and brief burn - in under laboratory conditions. Printed test report gives graph of Gain and Input Return Loss at rated P1dB and Voltage Conditions. Report shows pass/fail criteria. All amplifiers include this test.

Extended burn in - 8-hour burn in at P1dB with standard test run at completion. Unit is monitored during test and any discrepancy reported. Standard test data is included.

Extended data collection - Standard data is run and included. Detailed data is taken point by point giving the customer 25 - 70 frequency points, depending on the amplifier model. For each frequency point, data is generated to include gain, input power, input return loss, current, second harmonic, third harmonic, efficiency, audio distortion.

Other tests available - Vibration, Temp cycling, Shock. Please inquire.

The specifications contained herein are subject to change without notice. Delta RF Technology, Inc. assumes no liability for the use of this information.

This data sheet and contents are the property of Delta RF Technology, Inc. © Delta RF Technology, Inc. 2007.

